



The complete KODAK 1200i Wide-Format Printing System

Make the most of  
wide-format printing.





## Profitability.

At Kodak, we know that controlling costs is vital to your wide-format business and we wanted to enable you to reach new heights of profitability with a quality solution. The result was the complete KODAK 1200i Wide-Format Printing System.

Over 100 years of Kodak imaging expertise has generated the advanced wide-format technologies in our KODAK 1200i Printer, KODAK Quantum Ink and KODAK Wide-Format Inkjet Media. Combined, these products enable us to offer best-in-class cost per print\*, the ability to save you time, reduce waste and increase the efficiency of your workflow.

When you add the value of Kodak Service and a bundled RIP software option, you know Kodak can help you do more for less.

**Kodak's complete system solution enables you to build all your tradeshow graphics, kiosk displays and quality photographic output bigger, better, and smarter.**

# The complete wide-format printing system from Kodak.



## KODAK Wide-Format Inkjet Media

Consistent quality, universal printer compatibility and competitive pricing make Kodak's full range of wide-format media everything a graphics supplier demands to meet a customer's application needs. And nothing beats Kodak's Performance Guarantee for durability and longevity with multiple printer and ink combinations.



## KODAK Quantum Ink

Developed with over 100 years of Kodak color imaging science, quantum dye and pigment inks offer industry-leading color gamut and density, along with incredible longevity and fast drying time. Try quantum pigment ink for long-lasting UV- and water-resistant outdoor displays, and quantum dye inks for high-quality, color-rich indoor imagery.

\*Cost per print based on competitive data on ink US MSRP and US MSRP of photo gloss media, May 2005.

# Advanced technology for your wide-format business.

## Rapid evaporation drying system

A dual-component drying system offers a heated nose and ambient air plenum to improve drying efficiency for instant take up and faster print-to-lamination time.

## Intermediate ink reservoirs

Ink reservoirs enable users to use 100% of their ink, maintain a constant supply of ink to the print head, and allow ink bottles to be changed on the fly for uninterrupted printing.

## Variable speed for each application

Optimized variable print speeds cover the full spectrum of application needs – from high-quality to high-volume production (23 sfph – 220 sfph / 2.5 – 20.4 smph).

## Intelligent Mask Technology

Patented Intelligent Mask Technology helps optimize color gamut, density and vibrancy without compromising speed.

## Advanced thermal print heads

Advanced thermal print heads apply optimized drop size and are designed for easy, clean-hands installation during replacement or maintenance.

## Intelligent software suite

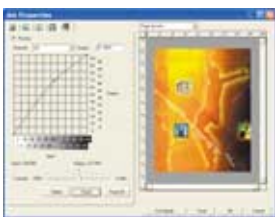
The 1200i software suite enables remote monitoring for overnight, unattended printing. With automated text messaging to your cell or e-mail, stay informed and on top of your work.

The software also offers supplies and job tracking for profitability management.



## KODAK 1200i Wide-Format Printer

## Kodak edition RIP software



Kodak has partnered with Scanvec Amiable to bring you a bundled RIP software option, making the Kodak printing system ideal for new wide-format businesses. It

has never been easier to set up a workflow and begin producing top-quality output.

Available in the United States, Canada and Latin America.



Print high-volume, same-day signage for one-day sales, department specials or bus-station graphics.



# Printer/Ink Specifications KODAK 1200i Printer

<b>Print Technology</b>	Thermal inkjet with IMT™ technology	
<b>Print Resolution</b>	300 x 300 dpi, 600 x 600 dpi, 1200 x 600 dpi	
<b>Standard Print Speeds</b>	<b>At 600 dpi<sup>1</sup></b>	
<b>Mode</b>	<b>60" wide model</b>	<b>42" wide model</b>
High Speed	220 sfph (20.4 smph)	195 sfph (18.1 smph)
Productivity	150 sfph (14 smph)	140 sfph (13.0 smph)
Fine	115 sfph (10.7 smph)	104 sfph (9.6 smph)
Enhanced	75 sfph (7.0 smph)	70 sfph (6.5 smph)
High Quality	26 sfph (2.8 smph)	23 sfph (2.5 smph)
<b>Ink Compatibility</b>	KODAK Quantum Ink dye and pigment ink sets	
<b>Media Compatibility</b>	KODAK Wide-Format Inkjet Media	
<b>Media Handling</b>	Standard automated media take-up and feeder system with media cutter	
<b>Media Drying</b>	Rapid Evaporation Drying System. Dual-component system preheats media via internal conductive heated nose and air plenum carries moisture away for take-up at full speed.	
<b>Interfaces</b>	100BASE-T Ethernet (TCP/IP)	
<b>Emulation</b>	EN-RTL	
<b>Drivers</b>	Windows 98/ME/NT/2000/XP File print utility ( Windows 98/NT/ME/2000/XP)	
<b>Software</b>	KODAK 1200i Software Suite for Windows 2000 Pro/XP Pro. Server and Client Systems control printer remotely, plug-and-play Ethernet setup, automatic update of firmware and software, and job accounting database.	
<b>Power Consumption</b>	25 watts idle, 1120 watts typical, Rated 10.5 A, 100 - 120 V / Rated 5.25 A, 200 - 240 V, 50 - 60 Hz	
<b>Dimensions</b>		
<b>Packed</b>	<b>60" wide model</b>	<b>42" wide model</b>
Height	30" (76 cm)	30" (76 cm)
Width	114" (290 cm)	96" (244 cm)
Depth	29" (74 cm)	29" (74 cm)
<b>Unpacked</b>	<b>60" wide model</b>	<b>42" wide model</b>
Height	48" (122 cm)	48" (122 cm)
Width	112" (284 cm)	94" (239 cm)
Depth	28" (72 cm)	28" (72 cm)
<b>Environment</b>		
<b>Operating</b>	65° F to 85° F (18° C to 30° C ) 20 to 70% RH non-condensing	
<b>Shipping</b>	5° F to 140° F (-15° C to 60° C) 5 to 80% RH non-condensing Maximum 24 hours at temperatures below 32° F (0° C) and above 104° F (40° C)	
<b>Storage</b>	40° F to 95° F (5° C to 35° C) 5 to 80% RH non-condensing Maximum 24 hours at temperatures below 32° F (0° C) and above 104° F (40° C)	
<b>Ink Storage</b>	Temperature: 65°-95° F (18°-35° C); Relative Humidity: 5% to 70%	
<b>Ink Shelf Life</b>	One year	
<b>Weight</b>		
<b>Packed</b>	<b>60" wide model</b>	<b>42" wide model</b>
	389 lbs (176 kg)	334 lbs (151 kg)
<b>Unpacked</b>	270 lbs (122 kg)	245 lbs (111 kg)
<b>Media Specifications</b>	<b>60" wide model</b>	<b>42" wide model</b>
Roll Size Width	24" to 60" (61 cm to 152 cm)	24" to 42" (61 cm to 106 cm)
Max. External Diameter	6" (15 cm)	6" (15 cm)
Core Diameter	2" (5 cm) 3" (7.6 cm) with adapter	2" (5 cm) 3" (7.6 cm) with adapter
Maximum Weight	60 lbs (27 kg)	60 lbs (27 kg)

<b>Printable Area</b>	
60" model	58.8" (149.4 cm) Normal, 59.6" (151.4 cm) Expanded
42" model	40.8" (103.6 cm) Normal, 41.6" (105.7 cm) Expanded
<b>Print Margin</b>	.59 in (15 mm) on all sides with Normal Margin .197 in (5 mm) on all sides with Expanded Margin
<b>Language Options</b>	English, French, German, Spanish, Italian, Portuguese, Chinese, Korean, Japanese
<b>Certification</b>	Safety: compliant with the requirements for the ITE products Electromagnetic Compatibility: compliant with the requirements for Class A ITE products: FCC rules, DOC ENERGY STAR® compliant
<b>Printer Warranty</b>	One year on-site. <sup>2</sup> Extended plan available for second and third years.
<b>Cartridge Warranty</b>	Cartridges have a warranty for 700 ml of ink throughput <sup>3</sup>
<b>Standard Accessories</b>	Six ink cartridges: light cyan, cyan, light magenta, magenta, yellow, black; Six 700 ml bottles: one each light cyan, cyan, light magenta, magenta, yellow, black; Sample roll of media; Quick Start Guide (hard copy), Reference Guide (CD), Software (CD)
<b>Printer Ordering Information</b>	<b>Part Number</b>
KODAK 1200i 60" w/stand and pigment setup kit	223257-00
KODAK 1200i 60" w/stand and dye setup kit	223258-00
KODAK 1200i 42" w/stand and dye setup kit	223419-00
KODAK 1200i 42" w/stand and pigment setup kit	223420-00
KODAK 1200i 60" w/stand and pigment setup kit - <b>RIP included</b>	223658-00
KODAK 1200i 60" w/stand and dye setup kit - <b>RIP included</b>	223659-00
KODAK 1200i 42" w/stand and dye setup kit - <b>RIP included</b>	223660-00
KODAK 1200i 42" w/stand and pigment setup kit - <b>RIP included</b>	223661-00

## Ink Ordering Information

Quantum Ink & Cartridge Kit (One pre-filled cartridge & one 700 ml ink bottle)		
	Pigment	Dye
Cyan	220880-00	220886-00
Magenta	220881-00	220887-00
Yellow	220882-00	220888-00
Black	220883-00	220889-00
Light Cyan	220884-00	220890-00
Light Magenta	220885-00	220891-00

## Quantum Ink Refill Kit (One 700 ml ink bottle)

	Pigment	Dye
Cyan	220035-00	220041-00
Magenta	220036-00	220042-00
Yellow	220037-00	220043-00
Black	220038-00	220044-00
Light Cyan	220039-00	220045-00
Light Magenta	220040-00	220046-00
<b>Ink Switchover Kit</b>	221984-00	

<sup>1</sup> Output speeds may vary slightly based upon image/file size.

<sup>2</sup> Warranty policy varies by region. For international warranty, please contact your local distributor/Kodak business partner for details.

## Performance Guarantee

Kodak offers a Performance Guarantee when you use Quantum Ink with KODAK Wide-Format Inkjet Media for both indoor and outdoor applications. Please refer to [www.kodakmedia.com](http://www.kodakmedia.com) for detailed Performance Guarantee information.

Specifications are subject to change without notice.

**For more information** please contact your local authorized Encad/Kodak Partner, or Encad, Inc.

### USA

P. 1-800-453-6223  
P. 858-452-0882  
F. 858-452-0891  
Corporate Office  
6059 Cornerstone Court W.  
San Diego, CA 92121  
UNITED STATES

### Europe

P. 44(0) 870-850-2483  
F. 44(0) 870-850-2484  
Hemel One, Boundary Way  
Hemel Hempstead HP2 7YU  
UNITED KINGDOM

### Asia

P. 65-6744-6400  
F. 65-6744-6700  
31 Ubi Road 1, #04-00 Annex  
Block, Aztech Building,  
Singapore 408694

# Kodak

[www.encad.com](http://www.encad.com)

©Eastman Kodak Company, 2005  
Kodak is a trademark of Eastman Kodak Company.  
All other trademarks are the property of their respective owners. 09/05



**Authorized Kodak/Encad Partner**

**PN 223674-00**